

November
2011

The MUSEUM *Light*

Edmonds-South Snohomish County Historical Society and Museum



IN THIS ISSUE:

President's/Board of Director's messages.....	page 2
Annual Dinner wrap-up	page 3
Collections Manager.....	page 3
Research Corner.....	page 4

Memories from the past.....	page 5
Halloween photographs.....	page 5
Volunteer opportunities.....	page 6
Current/Next exhibit.....	page 6
Membership news.....	page 7
Year-end Giving.....	page 7

**The Edmonds-South Sno. Co.
Historical Society & Museum**

Phone: 425-774-0900

Fax: 425-774-6507

Mailing Address: PO Box 52,
Edmonds, WA 98020

Shipping Address: 118 5th Ave. N.,
Edmonds, WA 98020



Museum Director

Tarin Erickson:

edmondsmuseum118@gmail.com

Collections' Manager

Caitlin Kelly: kellyrcaitlin@gmail.com

Society Officers

President:

Bill Lambert: welambert@comcast.net

Vice President:

Jack Hall: j.kathehalljack@frontier.com

Recording Secretary:

Verna Rauscher: vrauscher@comcast.net

Treasurer:

Mary VanMeter: mvm@frontier.com

Corresponding Secretary:

Bill Brougher: wbrougher@comcast.net

Membership Chair:

Liz Carpenter: ecarp@comcast.net

Board of Governors

Through February 2012

Stan Krahn: n/a

John McGraw: johnnymac7777@comcast.net

Dave Buelow: dbuelow@comcast.net

Through February 2013

David Johnson: Damajo3@comcast.net

Greg Bergere: n/a

Teresa Wippel: teresa@myedmondsnews.com

Through February 2014

Jerry Freeland: jffreeland@aol.com

Darlene Newquist: alphawiffy@comcast.net

Geoff Bennett: bennettg@edmonds.wednet.edu

The Museum Light is a publication of the Edmonds-South Snohomish County Historical Society whose mission is to perpetuate the memory and spirit of our pioneers; to identify and preserve historical documents, relics and incidents; and to encourage historical research, today and tomorrow.

Message from Board President, Bill Lambert

2011 has been an exciting and productive year for your Museum and Historical Society. Much has happened as we progressed toward our goals:

1. To grow community support and membership to 400 by 12/11; to 475 by 12/12 and to 550 by 12/13. We are so fortunate to have you as a member and hopefully as a volunteer in our many projects. I encourage you to renew your membership and to invite friends and neighbors to join as well.

2. To grow our programs, projects, and capability and to seek excellence in all we do, continuously improving the market, our communications with you and the community, and building partnerships with other organizations. We are especially excited about the oral history project with the High School and our project with the Fire Safety Foundation to find a home for the City's antique fire engine. Our train exhibit which opened in the spring continues to be very popular. Our goal is to achieve national accreditation, a process we will begin in 2012.

3. Finally, we must insure financial growth and stability by increasing our revenue with mini-fundraising projects like the Haunted Museum, grants to support new technology and new exhibits. Please see our year-end gift appeal on Page 7; be as generous as you can.

We are dedicated to sharing the history of our community. Thank you for supporting our efforts and celebrating the 100th birthday of the Museum this year.

Message from Museum Director

Fall has arrived at the museum, and we are glad it's here. In the past couple months, we have finished another great season of summer markets, we have a new exhibit, celebrated with 75+ members at our annual dinner, and welcomed more than 1,300 people through our doors on Halloween night. It's fun to get to connect with people in so many different ways.

We welcome you to stop by the museum this holiday season! We have renovated our gift shop and have new items to share with you. We have also made some membership gift certificates this year, so you can share the gift of history with your loved ones. We hope you have a happy and safe holiday season.

- Tarin

ESSCHS is a private, non-profit organization (501c-3) and receives no regular funding from the City or County. We welcome your support and membership!!!

Annual Dinner at the Edmonds Senior Center



The historical society's annual dinner was held Oct. 14, at the Edmonds Senior Center. The night included appetizers, dinner, cake and ice cream, a talk by speaker Larry O'Donnell, and a beautiful Edmonds sunset. Dinner was provided by Shooby Doo Catering and the cake was made by the Edmonds Bakery. We also introduced our new oral history project and grant-funded museum kiosks at the dinner.

We'd like to say a special thank-you to all of those that helped that night. Guild Members Kathe Hall, Joan Hertrich, Lynda Tripp, Carol Clos, and Jean Richards provided appetizers before the dinner, and various others donated to a chocolate and wine basket. Thanks to all who attended! We hope to see even more of you next year!

Collections

Getting to know our collections manager

We'd like to reintroduce Caitlin Kelly, our collections manager and volunteer coordinator at the museum. Caitlin does so much for the museum behind the scenes, and we want to make sure you know about all of the amazing work she's doing here. Here's what we asked her:



How long have you worked at the museum? I began interning in April of 2009 - soon to be three years.

What do you spend the majority of your time doing? Most of my time is spent working with the museum's artifact collection, in particular the photograph archives.

Do you have a favorite photograph or object from our collection? One of my favorite photos in the collection is No. 150.13. It's a postcard photograph taken from the bottom of George Street (Main Street) looking towards a saloon and another building. On the top porch is a man resting in a chair, and the bottom porch has two dogs, a horse and buggy at the corner, and around the corner is a bicycle resting against building. The photo was taken in 1905 and I love that it conjures up such an ordinary day and time in Edmonds.



What is the best part of your job? I'm constantly learning new things about Edmonds' past; I love discovering new information that we, the museum, do not have/do not know we have. Finding an object or person in a picture or article that had previously not been known is the best feeling.

What do you do when you're not at the museum? Wait... I'm allowed to leave? Outside of the museum I coach volleyball at Edmonds Community College during the fall, and for Island Thunder Volleyball Club's 12's (12 & under) team from December to June. When I do have free time I enjoy traveling and adventures with friends.

Favorite coffee drink? Triple Skinny Vanilla Latte

Research Corner

By Kathe Hall



CSI Edmonds: Mystery of the Skeleton

Solve Mystery of Skeleton

Edmonds Tribune-Review

July 31, 1931

July 16, 1931 - A Seattle man spending Sunday afternoon fishing off the Edmonds' ferry dock was disappointed when he pulled up his catch and a nice big salmon wasn't wriggling on the end of his line. There was, however, a brown burlap sack. A burlap sack was disappointing, but on closer inspection there appeared to be something in the sack and that aroused the man's curiosity. Junk, probably junk, he undoubtedly thought as he opened the bag, but to his surprise he saw a collection of bones and teeth!

Still fresh in everyone's minds was a murder that had been committed in 1928 and the victim's body was never found. The bones were thought to be those of James Eugene Bassett who was killed by Decasto Earl Mayer and Mary Eleanor Smith in 1928.

Who was Mr. Bassett? A veteran of the Army Air Corp, and a professional stenographer planning to take a position with the Department of the Navy in the Philippines. Mr. Bassett lived in Annapolis and the ship for the Philippines was harbored in Bremerton. What's a guy to do? He bought a brand new, three-tone blue Chrysler 75 roadster for his cross country trip.

Meeting with his sister in Bremerton and conferring with his brother-in-law, Commander Theodore H. Winters, (USN) he was soon convinced his car could not survive the Philippines. He placed a classified advertisement with

the idea of selling his car, in the Seattle Times that ran on September 2, 1928. A response to his ad came quickly and on September 4th a Mr. Clark arrived to look the car over. Mr. Clark wanted his mother to see the car so Mr. Bassett agreed to meet with Mr. Clark and his mother the following day in Seattle. Mr. Bassett vanished following that meeting. The police in several states were notified to be on the look out for a new three-tone blue Chrysler roadster and it was the car that led to their apprehension. They were tried, convicted, and imprisoned, but they never revealed where the body was buried.

Could the bones be those of Mr. Bassett? Further investigation was required and they were turned over to the City Marshal, Charles M. Larsen, who contacted the county coroner, and the sheriff's office. In the meantime, Dr. Kretzler, of Edmonds, was given the job of deciding whether they were human bones. Even though the skull, a shoulder blade and some bones from the hands and feet were missing Dr. Kretzler was able to determine they were human. In addition 11 teeth, parts of a casket, a moss agate, and some fresh blackberry bush leaves were discovered in the sack. Finally the remains were sent to the University of Washington to be examined.

Hoping to find more evidence, Ed Dow, a diver from the Everett water department was brought in to search the area around the dock, but to further evidence was uncovered. The story was headline news in Everett

and Seattle and certainly was on everyone's lips in Edmonds. All this talk finally jarred the memories of Leo Doty, Wilbur Wilson, and Gordon Sill. In June they had been cutting wood in the vicinity of the old cemetery once located between Ninth and Tenth when they noticed a depression in the ground. Digging into it they discovered a grave. They put the bones in a sack and hid the sack in a stump.

Walter Wilson and Russell Berg found the sack with the skull and a forearm and took it to Dr. Kretzler who identified them as human and then gave them instructions as to reburial. What happened next is not too surprising; they put the bones in a sack and took it to Wilbur Wilson's house. Later Wilbur and Leo Doty took the skull and kept it as a souvenir and then took the sack and threw it off the ferry dock.

Dr. Kretzler took Wilbur Wilson and Russell Berg to the sheriff and had them tell their story. When the boys explained where the bones were located it was determined the bones were those of William Ames who died in a logging accident around 30 years ago. The cemetery, east of Ninth near Dayton, where the remains were found, was closed in 1911 and all the bodies were thought to have been removed. Mystery solved.

I have found no evidence the body of Mr. Bassett was ever located. To read the complete story of Mr. Bassett, search online or visit History Link File No. 9805 at www.historylink.org.

My memories of Edmonds

By Jill Charlotte Stanford

How many times did I trudge up that long flight of concrete steps into the hushed atmosphere of the Library? A magical place for me because I could choose and take away books to read. I never dreamed that building would become a museum. I never thought I would leave Edmonds for that matter.

I grew up in Woodway Park (before it was incorporated) and attended Edmonds Grade School from the first grade through my Sophomore year. I would have been a member the of the class of 1957. My family moved to Portland Oregon. There are a few things I want you to know- they are trivial, but worth filing away SOMEWHERE.

Painted on the front of the Edmonds Hardware Store was this:

*Edmonds is part of the Heartland
Richly endowed by Nature
Bring some of this Beauty into your Home
With Beautiful Paint and Wallpaper.*

Crow Hardware had a stuffed crow in the window that got dingier and dingier through the years.

Mertie Otto's was where I pooled my babysitting money and bought my gifts for Mothers Day and Christmas.

Durbins carried Ship and Shore blouses, which were a standby for summer wear, but had to be ironed.

The Feed Store usually had a work horse in a stall for sale or rent (!), lots of chicks in the spring and a great smell of grain.

Engels Radio Shop had a television in the front window, which we all stood outside and watched.

I preferred Bentz Confectionary, where I would order a Green River. The penny candy selection was terrific. I saw Harry Truman on the back of a

railroad car, wearing his hat and waving, going slowly through Edmonds -- we had waited a long time for that train to appear and then it was gone.

The 5 & 10 store was the first place I heard "I'm Dreaming Of A White Christmas" with Bing Crosby. They piped it onto the street with a loud-speaker. They also carried red wax lips at Halloween, the flavor of which I am still searching for.

Santa Claus used to appear at the intersection and give out candy canes. I think Santa was the guy who drove the taxi from the Ford Garage, Yost's.

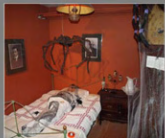
Lohmans Drug had a real black and white marble floor, as well as a real soda fountain with a marble slab and spinning stools with a mirror as a backdrop. At Valentines, they carried elaborate red satin hearts with bows, filled with chocolates. Larry Lohman (who was in my class) swept his father's store for weeks to earn one of those candy boxes which he delivered to me, by bicycle, without a word.

I am glad to see the bakery still has the high ceilings and wallpaper. The glazed donuts are still terrific.

Two years ago, I flew back from Hawaii, landing early in the morning at SeaTac. I rented a car and drove to Edmonds, where I had breakfast and then I drove around. I was astounded at the view of the Olympic Mountains from the playground of the grade school on the hill -- I had never noticed those mountains before and I was there for 8 years -- well, seven -- our second grade was held at the Field House down by the stadium. Why, I wonder?

Keep taking care of Edmonds history- small things make up a great deal of that history and all those small things made up my childhood in that little town.

*Haunted Museum
brings out
the crowds*



For more photos from our events, go to edmondsmuseum.smugmug.com

Volunteer Opportunity

Looking for a way to volunteer? We are always looking for new museum docents! What is a docent, you ask? A docent is a museum guide who welcomes visitors, tells them about the museum and answers any questions they might have. It's a great way to get involved and interact with your community. Our docents are an integral part of our museum; without them we wouldn't be able to open our doors! We ask for a minimum of a three-hour commitment each month (one shift per month), but we guarantee you'll enjoy every minute of it! For more details, please contact Caitlin at 425-774-0900, or email at edmondsmuseum118@gmail.com.

Current Exhibit:

PACIFIC NORTHWEST NEEDLE ARTS GUILD



AT THE EDMONDS HISTORICAL MUSEUM

Opening Reception
October 15
1-4 p.m.

ON EXHIBIT
OCT 12 - DEC 31
2011



Fwd: Historical Society eNewsletter now available

Help us do our part for the environment and have your newsletter emailed to you instead. You can also find archived newsletters in PDF format on our web site.

Just send an email to edmondsmuseum118@gmail.com with the word, NEWSLETTER™ in the subject line and we'll add you to the list. It's that easy!



Last chance to get RR stock!

If you're looking for a great, unique Christmas gift this year, come to the museum! We still have items available to purchase on our railroad layout. You will receive a paper railroad stock as proof of your purchase as well as your name on a plaque in the train room. Don't miss this chance to invest in your museum and cross a few names off your list!

Next Exhibit:

Weavers, Wobblies, and Woe



The story of shingle workers
in Snohomish County

Edmonds Mills + S.L. R.R.

Jan. 11-March 4, 2011

We would like to acknowledge the following donations and membership levels:

Donations received from:

Linda and Darryl Berg
Laurie Griffith

Teresa Pape

Sustaining Members

Bob Aldrich	Laurie Griffith
Stephen Beck	Dorothy P. Gross
Robert and Claire Brine	Evan and Josephine Lloyd
Diane Buckshnis and Steve Tholl	Arthur and Suzanne Lowell
Ted and Liz Carpenter	Lyn and Alan Macfarlane
Bob and Carol Clos	Maple Park Digital, LLC
Dr. Lawrence and Linda Cohen	Gail Michaels
Jim and Marilyn Cook	Darlene Newquist
Jeff and Lorena Daggett	John and Shirley Pauls
Barbara and Pat Fahey	Steven Pennington
Neal and Maria Fuller	Lorena M. Strickland-Williford
Char Garrett	

Benefactors

Norma Bruns	Chuck and Pauline LeWarne
Daphnes Bar	PFM Industries
Jack and Kathie Hall	Windermere Real Estate -
Dave and Marlene Johnson	Edmonds Office
Bill and Judy Lambert	

Business Members

Advanced Hearing Systems, Inc.	J & J Pharmacy
Arista Wine Cellars	Magic Photo
Bank of Washington	Main Street Electric
Beck's Funeral Home	Maple Park Digital LLC
Beresford Booth PLLC	Maverick Label
Campbell Nelson	M Karr LLC
Char E. Garrett, CPA	McDevitt & Andreason
Clyborne Real Estate	myedmondsnews.com
Coldwell Banker Bain	Nama's Candy Store
Comstock Jewelers	PFM Industries
Daphnes Bar	Reliable Floor Coverings
Edmonds Bakery	Resident Cheesemonger
Edmonds Barber Shop	Salon 512
Edmonds Bookshop	Sound Styles
Edmonds Center for the Arts	Stephen A. Bernheim,
Edmonds Chamber of Commerce	Attorney at Law
Edmonds Printing Co.	Walnut Street Café
Edmonds Vision Center, P.S. Inc.	Washington Federal
Edward Jones/Alan Lawrence	Waterfront Coffee Co.
Greater Edmonds Chamber of Commerce	Windermere Real Estate-
Guildmark Antique & Appraisal Service	Ron & Michelle Clyborne
Housewares	Windermere Real Estate -
	Edmonds Office
	The Wooden Spoon

Year-End Giving

From the words of Andrew Carnegie, whose museum building in Edmonds celebrates its 100th birthday this year, "Surplus wealth is a sacred trust which its possessor is bound to administer in his life time for the good of the community."

Few of us are in a position to donate at the level of Carnegie, but it has been said that: "It is not what you'd do with a million, if riches should ever be your lot, but what you are doing at present with the dollar and a quarter you have got!"

We come to you as loyal members and supporters and ask that you consider an extra gift for the Museum and Historical Society this year, to help us build and grow for the future. Any amount is welcome.

We believe that the work of the Board, and the results achieved by our new director, Tarin Erickson, deserve your recognition and your extra financial support. We sincerely hope that you will also validate our efforts by extending your membership into 2012. You can do so tonight if that is convenient or by returning this form to the Museum office. Finally, we ask for you to give the gift of your time and skills in 2012, renewing and expanding your volunteer efforts. Thank you very much.

_____ Yes, I will make an added donation for 2011 of _____.

For those 70 ½ or older with an IRA, you can transfer funds directly to the Museum without capital gains tax on the withdrawal; please consult your attorney or accountant.

_____ Yes, I will renew my membership for 2012 and make an added contribution of _____.

_____ Yes, I will continue or begin to volunteer. Please contact me.

Name _____
Email _____
Telephone _____

Edmonds-S. Snohomish Co.
Historical Society & Museum
PO Box 52* 118 5th Ave. N.
Edmonds, Washington 98020

Return Service Requested

Non-Profit
Org.
US Postage
PAID
Lynnwood, WA
Permit # 1071



Museum Open Hours:
Wednesday through Sunday
1pm to 4pm

Front cover: Downtown Edmonds in snow with Christmas tree at center fountain, 1989;
Photograph No. 150.235 (from the museum's collection)

RESEARCH CORNER SOURCES:

Internet: The Free Online Encyclopedia of Washington State Library
History Link Essay by Daryl C. McLary
History Link File #9805
www.historylink.org

Edmonds Tribune-Review, July 31, 1931

Edmonds The Gem of Puget Sound: Roy V. Cloud, pp. 10,136
